



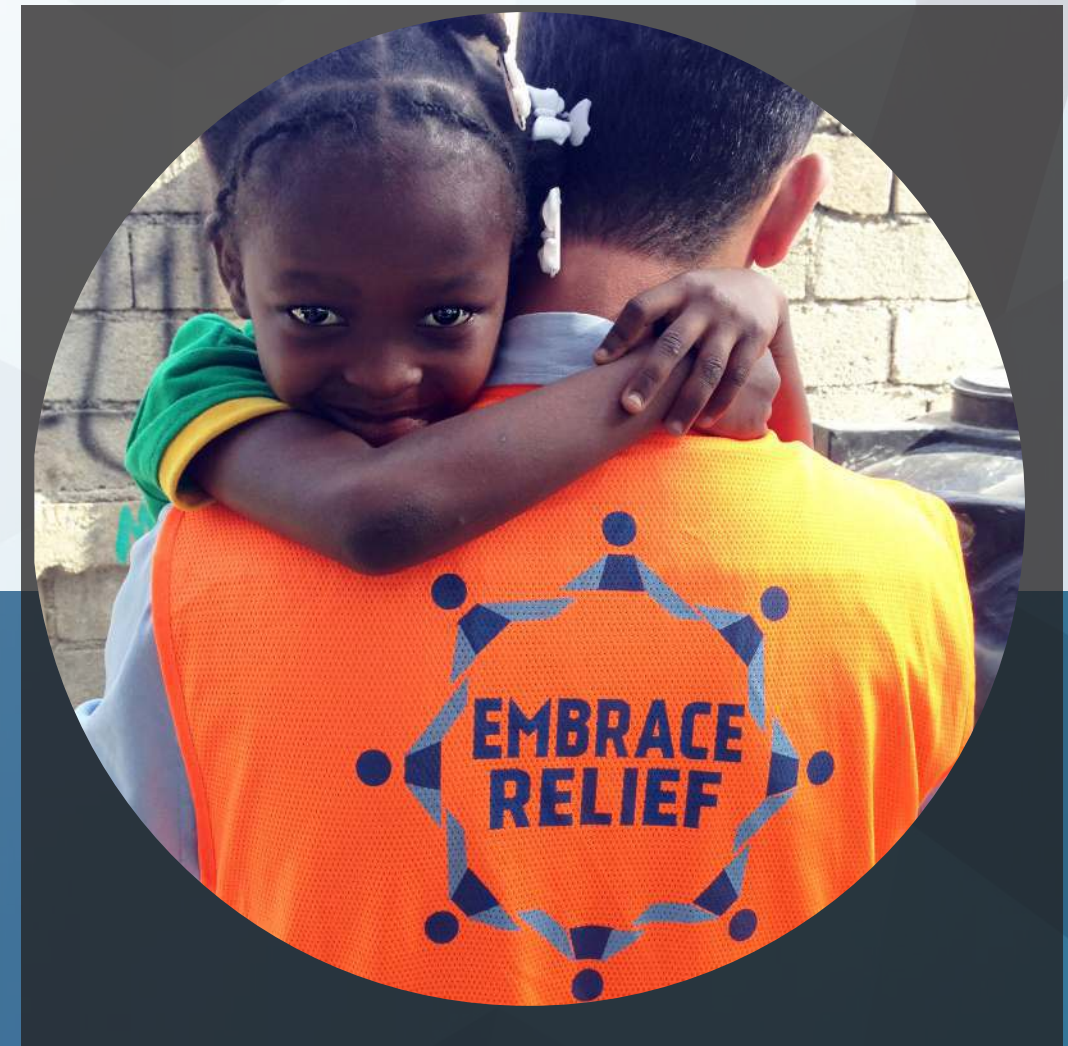
# Annual Summary 2018





“**The true measure of success... is not how much we promise but how much we deliver for those who need us most**”  
*Ban Ki-Moon*

Embrace Relief is a 501 (c)(3) non-profit international humanitarian relief and development organization headquartered in New Jersey. **With a commitment to providing aid to people who would otherwise have little to no other means of support, the organization seeks to leave a lasting impact on their lives through a multitude of initiatives which provide both immediate assistance and long-term solutions.** Established in 2008 by a founding team with extensive experience working in humanitarian contexts, Embrace Relief addresses humanitarian and development issues through a distinct, multi-pronged strategy which incorporates direct engagement with members of the communities served, a focus on implementing long-term solutions to global challenges, and maximizing the impact of donor funding.



Due to the founders' deep familiarity with the operations of the international development industry, **Embrace Relief has consistently sought to implement the most efficient projects for the world's most vulnerable.** In spite of its comparatively modest financial resources, the organization's emphasis on efficiency and resourcefulness has resulted in impactful initiatives encompassing healthcare, education services, hunger relief, child care, refugee aid, access to clean water, providing vocational training, and much more. Since its inception, **the organization has reached hundreds of thousands of people in 47 countries.** Unlike more traditional approaches to relief and development, Embrace Relief recognizes that every organizational endeavor must hold the capacity to fundamentally alter the trajectory of beneficiaries' lives for the better.



*Over 2,100 cataract surgeries were conducted. Over 21,000 health checkups were completed*

# Health

A main organizational goal is to address health issues that directly cause people to be dependent on others for survival. In addition to contributing to healthcare services globally, Embrace Relief gives special emphasis to treating cataracts because it remains the leading cause of preventable blindness worldwide. It is estimated that two million Africans experience vision problems stemming from cataracts. An insufficient number of doctors as well as a lack of financial resources translate to thousands with cataracts living in darkness despite the availability of a cure for a small cost. **With a fully equipped mobile clinic, Embrace Relief regularly administers health screenings throughout Africa and can conduct up to 30 cataract surgeries a day in hard-to-reach villages for a minimal cost.** This is possible only because the organization works closely with local partners to ensure the appropriate use of funds in order to reach as many individuals in need as possible.



Cataract: \$100 covers the cost of one cataract surgery and 10 health checkups





*GradPlus is an academic support program designed to help at-risk students complete high school and successfully transition to college or vocational training*

Direct engagement with local community members shapes Embrace Relief's efforts and allows the organization to have the most effective impact possible even within the confines of certain funding restrictions. This approach is taken with all organizational endeavors including the GradPlus program, an after-school initiative that offers tutoring, mentoring, and guidance to at-risk youth. Students who qualify for the program are provided access to the support they need to graduate high school, move onto higher education, and secure better employment opportunities. The tutoring component of the program tackles students' academic deficiencies and provides preparation for college entrance exams and vocational certification tests.

## Education

In cooperation with school administrations and local partners, **this program has the capacity to bring tangible change to students' lives.** The advantage to working in close collaboration with community members manifests in the organization's ability to adequately assess needs directly. For instance, the notion of gaining a higher education is commonly believed to be a pathway to gainful employment, while a lack of a college education may be perceived as a detriment to one's future. **However, the career readiness component of GradPlus provides for students who decide to enter the job market after high school and assists students in identifying vocational training programs. Through this aspect of the program, students are able to equip themselves with training that would offer financial self-sufficiency.**



The benefits of education for individuals and society at large are undeniable. Still, 115 million children globally lack basic literacy skills (UNICEF, "Literacy Rates"). Therefore, another issue addressed through Embrace Relief's campaigns is striving to improve educational outcomes for children in the US and around the world. In this area, specific organizational achievements include the following: **a school serving 350 students in Nigeria was constructed, 40 computers were shipped to schools in Afghanistan and 30 computers were sent to students in Haiti, 22,000 books were collected and donated for a new library in Romania, 2,650 backpacks full of school supplies have been distributed in the US and Haiti, and \$50,000 worth of merit-based scholarships were granted in the US.**



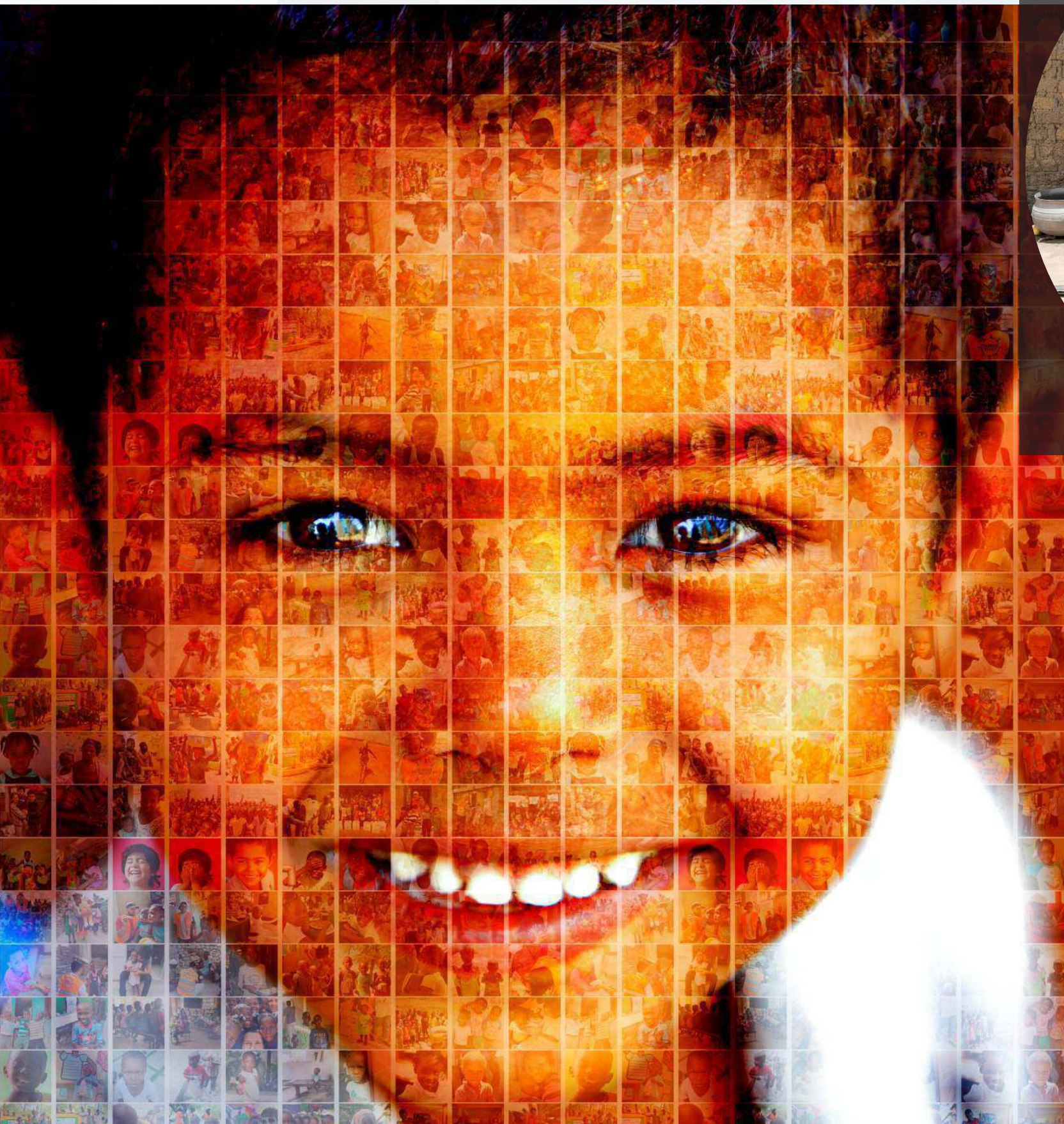


# *Embrace Relief has covered the yearly expenses of 1,036 children in Haiti and Africa*

Children: \$35 covers the cost of basic physical needs of one child for an entire month

## Children

Among children without access to education, children who have lost one or both parents are particularly vulnerable to a life of poverty and exploitation. With a distinct organizational model, a cohesive approach that includes adequate shelter, access to clean water, health screenings, and proper nutrition is pursued in order to alleviate the often-dire conditions of children and sustain their continued growth and progress. Primarily through a sponsorship program, Embrace Relief has covered the yearly expenses of 1,036 children in Haiti and Africa to this day.





# Over \$1.5M was spent on refugee relief

## Refugee Relief



With an estimated 68.5 million forcibly displaced people around the globe, the world is witnessing the worst refugee crisis in history (UNHCR). The vast majority of refugees are living in abject poverty without resources to meet their most basic needs. In order to address this immense need, Embrace Relief's refugee relief campaign seeks to assist people globally. At the height of the Syrian refugee crisis, **Embrace Relief organized a successful campaign in which we collected new or lightly-used winter clothing for refugees in over 100 drop-off locations throughout the United States and eventually shipped and distributed 29 full containers of items to people in need overseas.** We've also sponsored a soup kitchen serving hot meals to up to 4,000 refugees in a town on the Syrian-Turkish border for a whole year, and financially supported a primary school serving 350 refugee children in Istanbul. Similarly, we provide moral and financial resources to refugees who have been stopped in Greece through "adopt a family" programs and monthly stipends which allow them to **gain financial independence.** Embrace Relief has also worked with local and national organizations in the US to help acclimate incoming refugees to a new country by providing guidance and material support, and still tries to assist refugees worldwide through international partnerships.





*In 2018, food packages were distributed to more than 26,000 families on four different continents*

## Hunger Relief



Our world produces enough food to feed all 7 billion people, yet 1 in 9 people in the world is still hungry today. Approximately 815 million people in the world suffer from chronic undernourishment, and 49 million Americans struggle to put food on the table. To tackle this significant problem, Embrace Relief has organized countless food drives and food distribution campaigns since its inception. **To this day, Embrace relief has distributed over 1 million lbs of food both domestically and internationally to people in need in over 40 countries.** A great portion of this food was distributed directly to people through delivery or community events, while the rest were donated to regional food banks and local pantries, and Embrace Relief volunteers devoted their time and energy in soup kitchens, homeless shelters and community gatherings on many occasions.

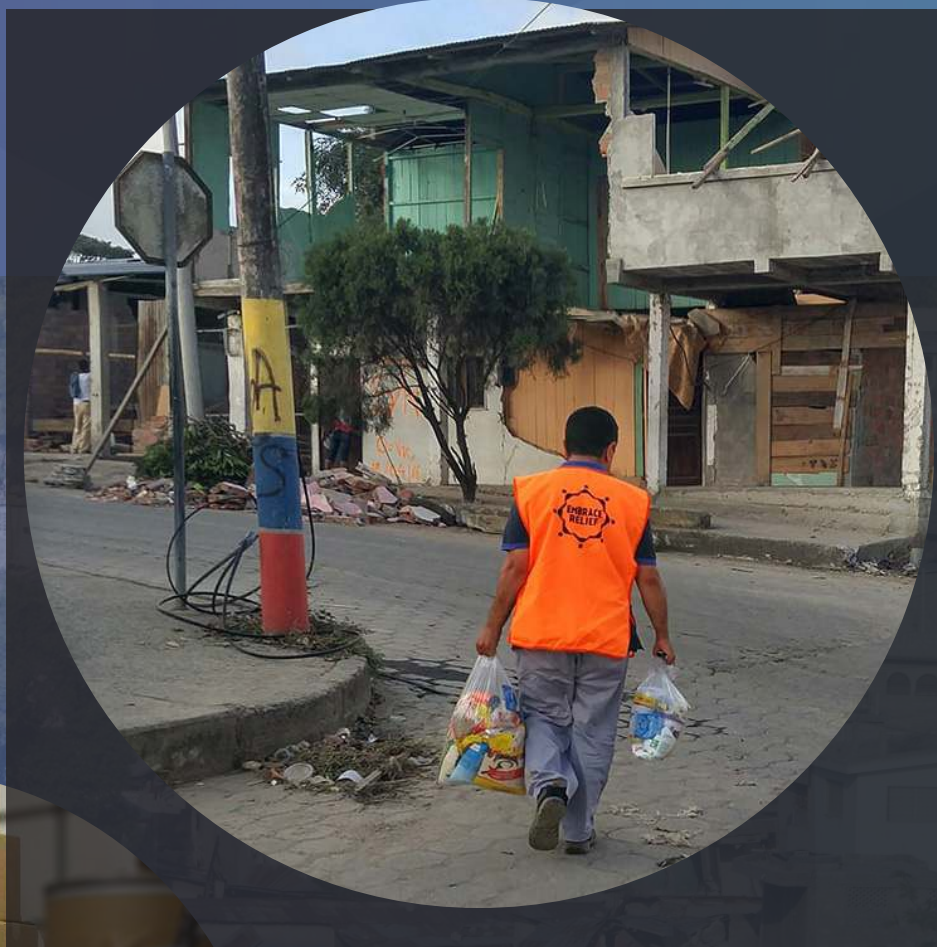
Two important hunger relief campaigns of 2018, “Thrive and Strive Food Drive” in the United States brought donors and American families in need together, while “Food Distribution in Yemen” has allowed our donors to directly respond to the hunger crisis in Yemen which the UN calls “the world’s worst man-made humanitarian disaster” with 8.4 million people considered at risk of starvation! Embrace Relief distributed food packages filled with essential food items (flour, rice, sugar and oil) to thousands of families in conflict-ridden in Yemen in 2018, and will continue to do so in 2019.





*Embrace Relief has spent over \$1.4 million for disaster relief efforts around the globe*

# Disaster Relief



Originally founded as a disaster relief organization to help victims of natural disasters at home and to respond to emergency situations in a timely manner, Embrace Relief still creates campaigns to alleviate immediate suffering caused by natural and man-made disasters both domestically and globally. Natural disasters affect approximately 160 million people around the world annually. So far, Embrace Relief has spent over \$1.4 million for disaster relief efforts around the globe. From successive hurricanes that struck the US (Sandy, Matthew, Harvey, Maria, Irma and Florence) to the California wildfires, from the earthquake in Nepal to the water crisis in Flint, Michigan, Embrace Relief always tries to respond to natural emergencies in a timely manner by providing food, water, clothing and funds to repair and restore lives. This multidimensional approach ultimately creates a positive ripple effect for beneficiaries.



*To this day, Embrace Relief has built 283 water wells that provide clean drinking water to over 283,000 people in Haiti and Africa*

## Clean Water

Clean Water: \$4,500 covers the cost of one water well and provides safe drinking water for 1,000 people on average, and gives their precious time and health back!



Thus far, **Embrace Relief has built over 283 water wells that have provided clean drinking water to over 283,000 people in Haiti and several countries in Africa.** Embrace Relief works closely with communities where water wells are built in order to ensure the proper maintenance and upkeep of water wells. With the support of its donors, **Embrace Relief aims to construct at least 1,000 water wells in developing countries by 2020.** In accordance with an organizational model that emphasizes direct engagement with communities served, Embrace Relief develops effective communication channels to provide regular updates regarding water wells to ensure sustainability of organizational efforts.

Similarly, this ripple effect on a society highlighted by Embrace Relief programs is apparent in the organization's clean water campaign. The organization's clean water efforts clearly illustrate Embrace Relief's uniqueness among international humanitarian relief and development organizations. **Although clean water is a basic human right, 3.4 million people die each year due to unsafe drinking water, while an estimated 2.1 billion people around the world do not have access to clean water.** Despite these appalling statistics, a meager six percent of global relief aid is allocated to water access in developing nations. Embrace Relief seeks to make progress on this often overlooked facet of development by providing water wells to communities that lack access to water.







In order to ensure the continued success of Embrace Relief's campaigns, the organization will continue to emphasize the importance of directly engaging with local communities, maximizing impact of donor funding, and implementing long-term solutions to global issues specifically by creating a ripple effect on communities through various projects.



Such strategy allows for maintaining accountability for the impact made in communities served, accurate assessments of needs and providing sustainable, beneficial solutions. With this approach, the organization has gained the ability to garner feedback from beneficiaries served and meaningfully and systemically respond to it.



# BOARD OF DIRECTORS

## **PRESIDENT: NEVZAT YILMAZ, PHD**

Dr. Yilmaz is a practicing CPA and firm director with over 30 years experience in accounting and business administration. He holds a Master's degree in economics from Northeastern University, Boston and a PhD in accounting from Istanbul University.

## **TREASURER: GALIP KIYAKLI, MBA**

Chief Operations Officer at Nema Food Dist. Inc with 20 years of diverse experience in all aspects of business administrations. Mr. Kiyakli holds a MBA from Point Park University, PA (2003) and a BSc in Environmental Engineering from Istanbul University (1996).

## **SECRETARY AND CEO: OSMAN DULGEROGLU**

During Dulgeroglu's tenure as CEO, he has expanded the organization's reach to over 40 countries and extensively broadened Embrace Relief's organizational focus. When Dulgeroglu joined Embrace Relief, the organization was primarily focused on disaster relief, and he is responsible for expanding the organization's focus to include humanitarian relief initiatives including refugee relief, clean water, and global health initiatives, among others. With more than 20 years of experience in operations, leadership, management, and human resources, Dulgeroglu started his career in education management. Prior to joining Embrace Relief, Mr. Osman was CEO of the Dream School in Pittsburgh and CEO of the Federation of Balkan American Associations. Mr. Dulgeroglu holds a BSc in Biology from Marmara University in Istanbul, Turkey.

## **MEMBER: WILLIAM ALEXANDER MOREL, MFA**

William A. Morel is an award-winning artist, currently holding the position of Associate Professor of Art and Design at St. John's University. Before joining St. John's, he developed editorials and documentaries for several international aid organizations such as the Pan American Health Organization (P.A.H.O.-W.H.O.), Organization of American States (OAS), and Accion International, among others. His personal work has been exhibited nationally and internationally since 1995.

## **MEMBER: WALTER MARIN**

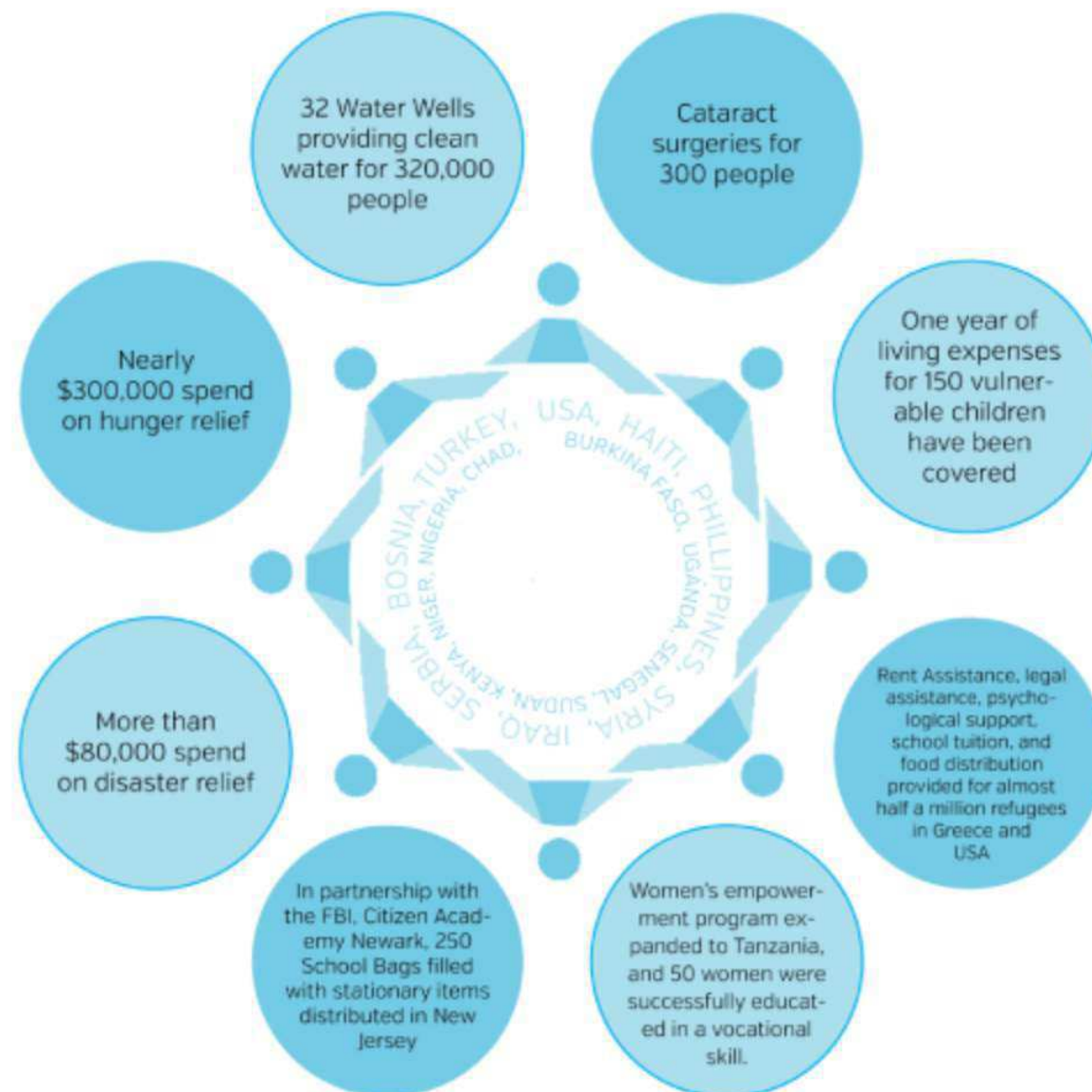
Mr. Marin is the founder and President of Marin Architects, an architectural design firm since 1987. Having completed a BS/BA in Architecture in 1982, he proceeded to work with well-known architectural firms including the Howard Golden Firm prior to establishing Marin Associates, which later grew to become the Marin Architects firm.





## Impact 2018

## Financials 2018

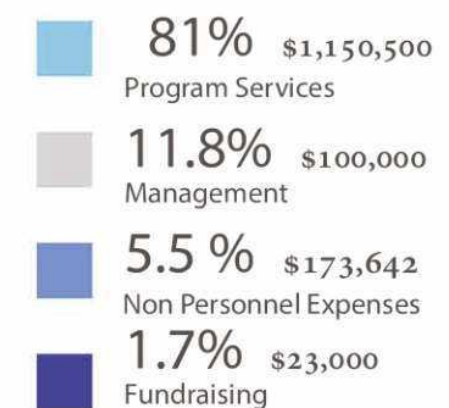
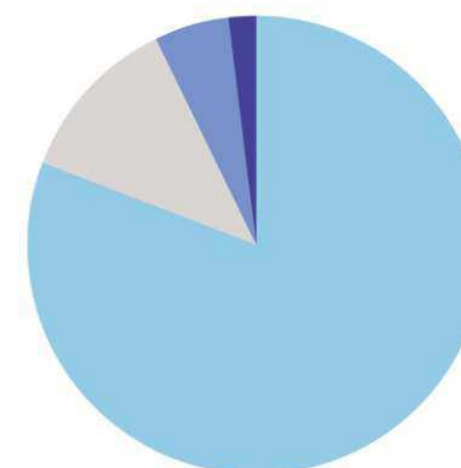


With your help, we've raised,  
**\$1,451,784**  
 and

**tens of  
 thousands  
 people  
 have benefited  
 this year.**

Embrace relief takes pride in the distribution of funds that we raise for our various projects. Funding the different campaigns has always come before administrative costs because our mission is to make sure that our projects are funded 100%. Our foundation is an open book and we strive to ensure transparency and clarity for the distribution of all money raised. As you thumb through our financial statement for the previous year you will see each project with a full detailed breakdown of the costs, the current status of the project and detailed information of all the people that benefited from it. As always, this information is updated on our website, [www.embracerelief.org](http://www.embracerelief.org).

Distributions of Funds,





# FINANCIALS 2018

## INCOME

RESTRICTED CONTRIBUTIONS	914,944
UNRESTRICTED CONTRIBUTIONS	524,341
IN-KIND DONATIONS	23,659
GRANT INCOMES	3,669.76
TOTAL INCOME	1,462,944

## EXPENSES

PROGRAM EXPENSES	1,045,459
MANAGEMENT EXPENSES	110,000
FUNDRAISING	83,346
NON-PERSONAL EXPENSES	220,645

## NET ASSETS

**440,497**

## ASSETS

CASH AND CASH EQUIVALENTS	401,702
FIXED ASSETS	24,719.77
PROPERTY EQUIPMENT	32,458
OTHER ASSETS	8,816.66
TOTAL ASSETS	442,977

## LIABILITY

CURRENT LIABILITIES	2,480
OTHER LIABILITIES	0
TOTAL LIABILITIES	2,480





If you want to be a part of  
fantastic programs like these,  
please become a donor for  
Embrace Relief today!

**Embrace Relief**  
201-528-3181  
18 Passaic Ave Unit 1  
Fairfield, NJ 07004  
[info@embracerelief.org](mailto:info@embracerelief.org)