



Annual Report 2019





Mission

Embrace Relief is a 501 (c)(3) nonprofit international humanitarian aid and development organization headquartered in New Jersey, USA. Driven by a commitment to serve those who would otherwise have little to no other means of support, **our initiatives encompass education, healthcare, women's empowerment, refugee relief, childcare, hunger relief, clean water, and disaster relief.**

As a research-based organization, Embrace Relief emphasizes the need to address humanitarian and developmental issues through **in-depth research**. By creating and maintaining close relationships with the people in the communities we serve, partners, and donors, we are able to stay connected and see their impact firsthand. **Our mission is to ensure sustainable and efficient solutions to those less fortunate and create self-sufficiency in the place we work.**

Hello!

The Embrace Relief team would like to thank you for all of your generous support this past year of 2019. Your humanitarian spirit has helped millions of people in need improve their lives around the globe. The organization is not the hero to those who were helped, you are the hero.

When you help others in need, our bond as a human race is strengthened and can make global changes.

Our mission of creating a lasting impact to help improve lives still remains strong, and from the bottom of our hearts, thank you so much for your kindness, loyalty, and support!

Sincerely,

Osman Dulgeroglu
CEO



Health



Every year, millions of people in Africa needlessly suffer due to a lack of access to healthcare. As the leading cause of preventable blindness worldwide, Embrace Relief emphasizes the treatment of cataracts. Embrace Relief currently supports two medical facilities and a fully equipped mobile health clinic in Bamako, Mali. The mobile clinic enables us to reach and address the healthcare needs of those in remote villages. So far, we have conducted 27,440 health check-ups and enabled 2,384 people to regain their eyesight after receiving cataract surgeries.

**So far, you
have helped
us provide**

27,440

**health
check-ups
and**

2,384

**cataract
surgeries**



Education



Embrace Relief recognizes the integral role education plays in poverty alleviation. During the year, GradPlus continued to serve the educational needs of youth in Paterson, New Jersey, a city with a 29% poverty rate. GradPlus is an academic program designed to help at-risk students complete high school and successfully transition to college or vocational training. It provides tutoring sessions, mentorships, and guidance as well as career-readiness opportunities.

Self-sufficiency is the primary goal of GradPlus. It seeks to break the cycle of poverty by setting students on a path towards greater opportunities. The program instills confidence, self-sufficiency, and academic empowerment. So far, 130 students in 16 high schools were offered free SAT and CASAS training.



In 2019, Embrace Relief launched the Accessible Computer Technology for Underserved Students (ACT-US) program, an initiative implemented in Uganda and Tanzania. Through this program, 324 computers equipped with Endless OS technology will be distributed to K-12 schools. Endless OS is an operating system specifically designed to provide educational resources to students with limited access to the Internet and technology. The computers are pre-installed with applications dedicated to general school subjects such as science, math and reading, as well as life skills development including health, farming and sanitation, among others. ACT-US seeks to serve 7,000 students daily.

Throughout the year, Embrace Relief donated over 33,000 books to libraries and schools in Tanzania and Romania.



Children



Hunger Relief

Globally, a child dies every three seconds because of food deprivation, and children often experience poverty as a lack of education, water, health, and nurturing. Therefore, **Embrace Relief prioritizes our Raise the Children initiative serving orphaned children in Nigeria, Kenya, Democratic Republic of the Congo, and Tanzania. So far, 1,117 children have been provided with safe housing, food, clean water, and education because of your generosity.**

Embrace Relief has renovated the Amani Orphanage in Tanzania and four orphanages in Haiti. Furthermore, Embrace Relief provides continuous support to the children in the Hiari Orphanage in Tanzania, Foundation Galaxie: Orphelinat Mer Ter in the Democratic Republic of the Congo, and the Nisaau Ahlil Jannah Charity Foundation in Nigeria.

Our world produces enough food to feed all 7.8 billion people, yet 821 million people still face chronic hunger daily. According to the United Nations, the world's hunger crisis is "the world's worst man-made humanitarian disaster". To combat the crisis, **Embrace Relief has distributed over 1.5 million pounds of food in over 40 countries. Through our hunger relief initiatives, we have fed over 935,000 families and delivered food packages to orphanages, food pantries, and food banks throughout the world.**



Women's Empowerment



Women's economic and educational empowerment is essential for our collective future. Embrace Relief has provided vocational training to women in Kenya and Haiti where they learned to make jewelry, sew, and took personal finance classes, enabling them to start their own businesses.

Embrace Relief believes in the transformative power of educating women and prioritizes this effort through our Reach Inspire Support Educate (RISE) program. RISE is an educational program that assists women in Tanzania who are seeking higher opportunities for themselves. Women are able to receive assistance through two categories of RISE: the Educational Leadership and Management Program and the Young Women's Higher Education Program. The goal is to encourage the pursuit of education and give women the opportunity to influence positive changes in their societies.

Through RISE, 13 young women in Tanzania are currently receiving financial support for their college education including support for the cost of tuition, housing, transportation, meals, and books. In addition, 14 female educators have registered to take a 2-year course that will give them the training and certification to be supervisors or managers of schools. The Ministry of Education in Tanzania will appoint these women to various schools throughout the country. This program elevates not only opportunities for these women, but also the young girls in the schools who witness these women climbing the educational ladder. This inspires and motivates young girls to stay in school and pursue an education.



Refugee Relief



Displaced people flee their countries due to war and violence as well as intellectual, religious, and political persecution. Every minute, 24 people are forcibly displaced, seeking safety and asylum. Embrace Relief's refugee relief programs have been a success with your unending help. 1.4 million refugees have regained a sense of normalcy via emergency housing, food packages, legal assistance, and psychological support. Furthermore, through our English Language Program, 152 refugees are currently receiving weekly online English classes. This program offers group classes and one-on-one lessons to refugees who are systematically paired with an English-speaking volunteer that teaches them English. As a universal language, many refugees expressed a need to learn the language in order to facilitate an easier transition to a safer country.

With over 70.8 million forcibly displaced people globally, the world is facing the highest level of displacement on record.

149
refugees are receiving weekly online English classes



Clean Water



Globally, 790 million people currently lack access to a clean water supply and 1.8 billion do not have proper sanitation

Embrace Relief recognizes that water is essential to sustaining life and builds water wells for communities in Africa to tackle this issue.

With the numerous projects led by our donors, Embrace Relief has constructed 315 water wells - all of which are 100% still flowing with clean water - serving over 315,000 people everyday in Nigeria, Niger, Cameroon, Kenya, Chad, Haiti, Uganda, Burkina Faso, and Senegal. Embrace Relief surveys the communities and land where water wells are constructed to determine how deep the well should be dug in order to optimize efficiency and sustainability. We achieve this by digging deep into the ground until fresh and filtered water is found to ensure the safety of individuals in the communities served.



315,000
people have access to clean water



Disaster Relief



Impact 2019



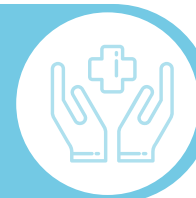
As the world experiences increased levels of climate change, it causes unprecedented severe natural disasters such as earthquakes, hurricanes, tsunamis, floods, raging fires, and water crises. Embrace Relief has provided disaster relief to over 369,000 people around the world who have been affected by these emergencies ranging from the California and Texas wildfires to the earthquake and tsunami in Indonesia, and everywhere in between with the help of our generous donors. Embrace Relief provides emergency basic needs and funds to alleviate the suffering caused by these disasters. Our main goal is to provide support to repair and restore the lives of those affected.



29 water wells providing clean water for 29,000 people



244 cataract patients sponsored and 5,160 health check-ups



\$482,681 spent for 137,909 people facing hunger



324 computers provided to impoverished schools in Tanzania and Uganda for 7,000 students through our ACT-US program



10 students in Passaic County benefited from our mentorship program to complete high school and successfully transition to post-secondary levels of education or career opportunities.



\$12,075 spent for disaster relief. 2,415 people benefited.



Monthly donations for 81 orphaned children have been covered



Rent assistance, legal assistance, psychological support, tuition fee, and food distribution provided for 4,801 refugees





Financials 2019

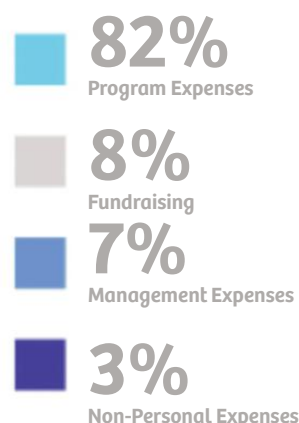
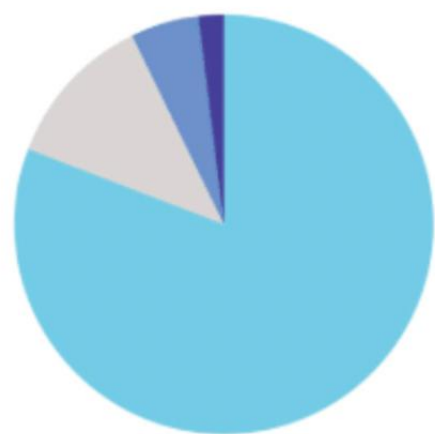
With your help we've rasied,

\$1,682,613

and over

480,000

people have benefited this year



Total Net Assets: **\$448,324**

Embrace relief takes pride in the distribution of funds that we raise for our various projects. Funding the different campaigns has always come before administrative costs because our mission is to make sure that our projects are funded 100%. Our foundation is an open book and we strive to ensure transparency and clarity for the distribution of all money raised, As you thumb through our financial statement for the previous year you will see each project with a full detailed breakdown of the costs, the current status of the project and detailed information of all the people that benefited from it. As always, this information is updated on our website, www.embracerelief.org.

Embrace Relief

Board of Directors

Type of Membership	Name	Biography
President	Neuzat Yilmaz	Dr. Yilmaz is a practicing CPA and firm director with over 30 years experience in accounting and business administration. He holds a Master's degree in economics from Northeastern University, Boston and a PhD in accounting from Istanbul University.
Treasurer	Galip Kiyakli	Chief Operations Officer at Nema Food Dist. Inc with 20 years of diverse experience in all aspects of business administrations. Mr. Kiyakli holds an MBA from Point Park University, PA (2003) and a BSc in Environmental Engineering from Istanbul University (1996).
Secretary	Osman Dulgeroglu	With more than 20 years of experience in operations, leadership, management, and human resources, Dulgeroglu started his career in education management. Prior to joining Embrace Relief, Mr. Osman was CEO of the Dream School in Pittsburg and CEO of the Federation of Balkan American Associations. Mr. Dulgeroglu holds a BSc in Biology from Marmara University in Istanbul, Turkey and a Master's in Nonprofit Administration from Louisiana State University.
Member	Walter Marin	Mr. Marin is the founder and President of Marin Architects, an architectural design firm since 1987. Having completed a BS/BA in Architecture in 1982, he proceeded to work with well-known architectural firms including the Howard Golden Firm prior to establishing Marin Associates, which later grew to become the Marin Architects firm.
Member	William Alexander Morel	William A. Morel is an award-winning artist, currently holding the position of Associate Professor of Art and Design at St. John's University. Before joining St. John's, he developed editorials and documentaries for several international aid organizations such as the Pan American Health Organization (P.A.H.O.-W.H.O.), Organization of American States (OAS), and Accion International, among others. His personal work has been exhibited nationally and internationally since 1995.
Member	Kirstin Vanderheof	Since joining Embrace Relief's board of directors in February 2020, Kirstin has brought extensive financial knowledge and experience. Working in finance for nearly 15 years in banking, education, and the Westchester County Department of Social Services, she now sits as the chairperson for Embrace Relief's Finance Committee. Kirstin holds a B.S. in International Business Management and is currently pursuing her master's degree in Homeland Security and Public Safety at Pace University.

Thank You!

To all those who provided support in any form throughout the year, Embrace Relief expresses its deepest gratitude and appreciation.

Because of you, we have been able to help ease the burdens of poverty and reduce the suffering of millions around the world. Our network of donors, supporters, and community partners are vital to all organizational efforts, and without you, none of this would have been possible.

Embrace Relief continuously seeks to bring people together for a cause greater than ourselves, and with you, we will continue to positively impact the lives of millions!

If you wish to join us in our cause for a better world with a bright future, become a donor of a cause you are passionate about with Embrace Relief today!

Embrace Relief
201-528-3181
18 Passaic Ave Unit 1
Fairfield, NJ 07004
info@embracerelief.org

