

Embrace Relief Impact Report 2021



Embrace Relief is a 501(c) (3) nonprofit organization based out of New Jersey, USA. Embrace Relief focuses on providing aid and support to individuals and communities most in need, including many countries in Africa. Embrace's mission is to deliver research-based solutions that have long-term positive impacts. Embrace Relief's projects fall in line with the United Nations' Sustainable Development Goals and work to achieve them. Embrace is committed to creating a lasting impact on individuals' and families' lives, improving their well-being, and empowering them. By consistently interacting with the communities and individuals we serve through partners, donors, and volunteers, we can provide the most beneficial help; partnering with local, governmental, and non-governmental organizations has proven to be one of the most beneficial catalysts for enhancing accountability for and reach of all initiatives. By engaging with various communities and understanding their struggle for basic necessities, we are able to create meaningful change and help lift communities out of poverty. Embrace Relief gives hope to communities by providing necessary resources and components that create positive socio-economic changes.

The approach at Embrace Relief is unique to any other non-profit and allows us to be effective in providing aid of all forms; financial, emotional, and



Embrace Relief
is committed to
creating a
lasting impact
on individuals'
and families' lives,
improving their
well-being, and
empowering them ”

We provide aid of all forms:



Financial



Emotional



Physical

physical. Our approach relies on combining the important efforts of three groups; donors, volunteers, and partners. Every campaign and partnership we develop is unique and developed to fit the needs of that region and community members. Regardless of the specifications, every campaign and partnership stems from the virtue of helping those most in need around the world. Partnering with local, governmental, and non-governmental organizations has proven to be one of the most beneficial catalysts for enhancing accountability for and reach of all initiatives.

In addition, we apply Maslow's Hierarchy of Needs to our projects. The theory suggests that other needs, including peak self-actualization and self-esteem, are unattainable unless basic physiological needs of air, food, water, shelter, clothing, and safety are met.

This can be applied to the water crisis in Africa, where due to lack of access to clean water causes people to spend up to six hours getting unclean water that leads to waterborne illnesses. Providing clean water to communities in need is a priority for Embrace Relief. 785 million people in the world suffer from a lack of clean water, and roughly 400 million of those people live in Sub-Saharan Africa. Currently, we have over 450 newly built water wells and have reconstructed over 50 pre-existing wells. These wells provide much-needed clean, safe water to 500,000 people in Africa, with efforts focused on Chad and Cameroon. Safe living conditions are also vital, and the

People in Africa can spend up to



getting unclean water that leads to waterborne illnesses

Embrace Relief's response:



450 new water wells

50 reconstructed
pre-existing wells

500,000
people in Africa
provided with clean
water

increasing lack of access to resources and farmable land has caused refugees in Africa. Within Africa, 59 million children suffer from stunting due to malnutrition, and in the Sub-Saharan region, 3.2 million children die under the age of five every year. In over 50 different countries, we have distributed food packages to more than 1.2 million people in need. Without proper nutrition, other needs and means of self-empowerment cannot be achieved. Our refugee program works to provide emergency housing and rental assistance to refugee families; to date, we have aided over 1.4 million refugees. We currently have 280 families set up with rental assistance and over 300 refugees registered for free English language courses. In addition, we currently

have over 4,200 students in our First Bricks program that help children of refugee families to adapt to their new living environment, supported by over 400 volunteer teachers educating them with more than 20 subjects.

Within Africa,

3.2 M



children die under
the age of

five

Embrace Relief's response:



280 rental assistance

4,200 students in First Bricks

1.4 M

refugees aided by
Embrace Relief

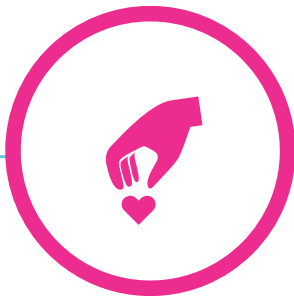


50 different countries

1.2 M

food packages
distributed to people
in need

After these needs are met, it is important to meet the need for education in regions that are without. The Sub-Saharan region in Africa suffers from a significant underinvestment in education. For example, in Uganda, only 40% of students are literate after primary school, and less than 24% of adolescents are enrolled in secondary school. We have provided over 300 ICT computers as part of our ACT-US program, which aids in the learning of over 7,000 students. Gender inequality is a major issue, and supporting women's empowerment is vital. In Tanzania, only 15% of female students continue to upper secondary schooling, which results in much of the female workforce is in agriculture. Due to this restricted access to education, 37% of young women from Tanzania marry before the age of eighteen. Our women's empowerment program currently has 24 women who are sponsored for the completion of either the Diploma in Education Management program or the Diploma in School Inspection program offered by the



24 women sponsored

In Uganda, only



of students are literate
after primary school

Embrace Relief's response:

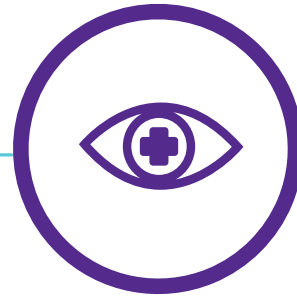


300+ ICT computers

7,000
students aided

Agency for the Development for Educational Management. In addition to women, we focus on providing support to children. Armed conflicts within specific countries and deadly diseases like HIV/AIDS, malaria, and Ebola leave an estimated 32.1 million orphaned children in Africa alone. Throughout the Raise the Children program, we have provided support to thousands of children through three different orphanages in Africa. Support consists of aid for their food, water, shelter, and health insurance. Health is also an important element to well-being that is unobtainable in many regions and communities. In Mali, Africa we have provided more than 4,000 cataract surgeries and over 64,500 free health checkups to folks in the area. We have also worked together in a partnership with SOUTHCOM, the U.S Military's Humanitarian Assistance Program. In this partnership we have been able to distribute 129 bookbags, 585 pairs of children's shoes, and 24,960 packets of antibacterial wipes to rural communities in Guatemala.

Embrace Relief is active in helping communities in the U.S as well, responding to the COVID-19 pandemic by supplying more than 1.9 million PPE equipment such as face masks, hand sanitizers, disinfecting wipes, thousands of paper towels, and over 1,700 rolls of toilet paper. Embrace also provided 20 gallons of antibacterial soap to local hospitals and provided over



4,000 cataract surgeries

66,000
free health checkups

We have responded to
COVID-19 by supplying more
than

• **1.9 Million**
PPE equipment such
as face masks, hand
sanitizers, disinfecting
wipes, etc.

4,000 hot meals to frontline workers. We also provided monetary support to over 80 families and distributed 18,650 food packages.

Embrace Relief believes that a successful impact requires a successful business -- we are an accredited charity with the Better Business Bureau, have five stars on GreatNonprofits and a platinum rating on GuideStar, and we are approved by InterAction Member Standards.

It is important to remember that we are discussing facts, elements of people's lives; these are not just stories. Through our projects, we can sustainably change lives, in a way that follows along with the UN's SDGs. Each of the projects at Embrace Relief works to improve the livelihood of individuals around the world. It is important to distinguish between what will be done and what has been done, and we at Embrace Relief prefer to focus on what has been done to

improve lives, not just talk about it. Embrace is constantly working in countries on the ground to provide the support they need to survive, thrive, and empower themselves, enabling them to ascend to the top of Maslow's hierarchy of needs. Thanks to the generous support and dedication of our partners in countries, donors, and volunteers we are able to touch so many lives in a meaningful way.

