

CLEAN WATER INITIATIVE

Frequently Asked Questions



1

What happens after I donate to build a water well?

Once your fundraising is complete, our local team begins construction. From start to finish, it typically takes **4 - 6 weeks** to fully complete the well. During this time, we handle everything, from site inspection to drilling and installation.



2

How deep are the wells?

Our handpump wells are drilled over **120 feet deep**, reaching clean and uncontaminated groundwater. This depth helps ensure the water is free from surface-level pollution.



3

What materials and systems are used?

Each well is equipped with a **galvanized pipe system**, a **filtration system** and a **handpump mechanism**.



4

How many people can one well serve?

On average, a single well can serve over **1,000 people every day**, providing a vital and consistent source of clean water for drinking, cooking, and hygiene.



5

How much does it cost to build a well?

The cost of building one handpump water well is **\$3,500**. This includes all labor, materials, installation, and maintenance support.



6

Is there any warranty or support after installation?

Yes! Every well includes a **five-year warranty**, which covers repairs and ensures functionality. We also perform **annual checkups** to keep each well operating efficiently for years to come.



7

Where can I choose to build a well?

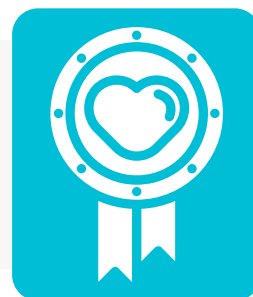
You can choose to sponsor a well in Chad, Cameroon, Nigeria, Tanzania, Uganda or Benin (our newest location!).



8

Can I dedicate the well to someone or name it?

Absolutely! Many donors choose to **name the well in honor of a loved one, organization, or group**. Once we receive your preferred name, we'll include it on the well's plaque and promotional materials.



9

Will I receive updates or photos of the well?

Yes! After your well is completed, **we will send you photos** and a **project report** including the location, the community it serves, and confirmation that the well is operational.



10

How can I get started/create a fundraising page?

You can start your project by reaching out to our team. Once you've chosen your location and provided a well name, we'll create a **custom fundraising webpage** for you to share with friends, family, or your community.



?

Still have questions?

Feel free to contact us at water@embracerelief.org. We're happy to help you make a lasting impact!